

Australian Rollforming supplied 40,000 metres of pre-galvanised Noise Wall Panels and 8,500 square metres of pre-galvanised Void Covers to the new Deer Park Bypass motorway in Victoria.

The Noise Wall Panels had to satisfy a number of stringent performance criteria, & Australian Rollforming's Noise Wall Panels were chosen ahead of other materials and systems based on:

- Superior sound attenuation qualities
- Aesthetically appealing
- Low maintenance
- Quick & easy to install
- Long life span
- Cost effectiveness



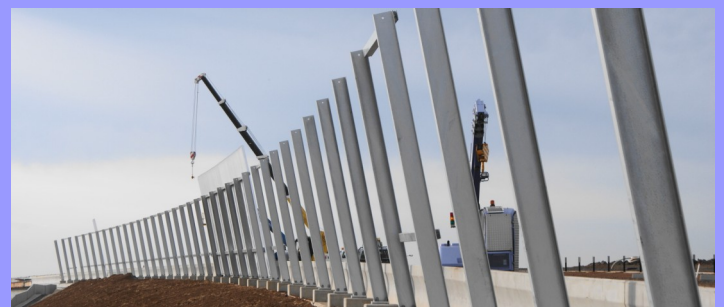
The Noise Wall Panels were rollformed into a 90mm deep trapezoidal profile from 2.5mm & 1.6mm thick galvanised steel & after rollforming the corners of each panel were given a precision mitre cut.

The walls were joined at varying angles to create a unique architectural appearance, & the precision mitre cutting of the panel corners was critical to ensure that all the wall joints were a perfect fit.



Double sided sections constructed from 1.6mm thick panels were used in residential areas to further enhance both the aesthetic appeal & the sound absorbing qualities.

Once installed, the panels extended for 4 kilometres along either side of the highway to form an architectural feature.

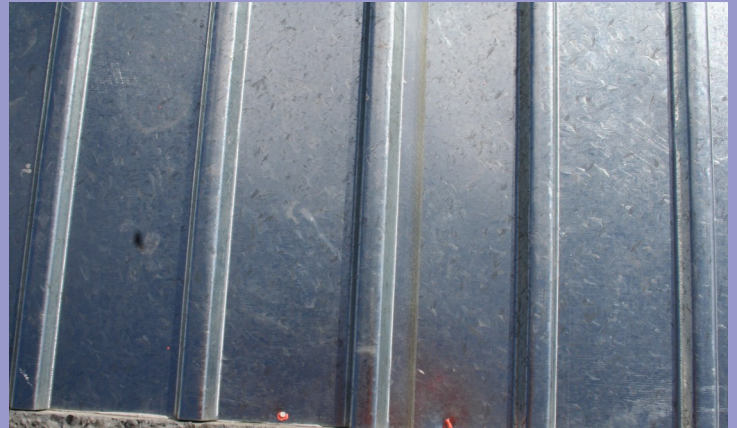


The Company was awarded the 2010 prestigious Manufacturers' Monthly Endeavour Award for Australian Steel Innovation for the Noise Walls that were supplied to this project.

The Void or Trough Covers were rollformed into a 21mm deep profile & pre-cut to length to the exact void widths in Australian Rollforming's Dandenong factory.

In total over 13,000 individual void covers were supplied to the project & once on site the covers were simply glued into the recesses provided at the top of the concrete bridge beams.

Once installed into the beams the covers blocked off the void or trough in the beam when the concrete road slab was poured.



Australian Rollforming's rollformed Void Covers were chosen ahead of the traditional timber covers based on:

- Being pre-cut to the exact void widths, eliminates the need for any further cutting during installation
- Quicker, easier & safer to install
- Unlike timber based covers, Australian Rollforming Void Covers do not shrink, swell or break when left exposed outside
- Material wastage is minimised
- Being easier & quicker to install & requiring less material & labour, Australian Rollforming's Void Covers are more cost effective than alternative products

Contact us to discuss your requirements.

Our reputation for reliability and our ability to partner our customers sets us apart from our competitors.



© Copyright in this material vests in Australian Rollforming Manufacturers Pty Ltd and may not be reproduced, adapted, published or communicated to the public without the express written permission of the copyright owner