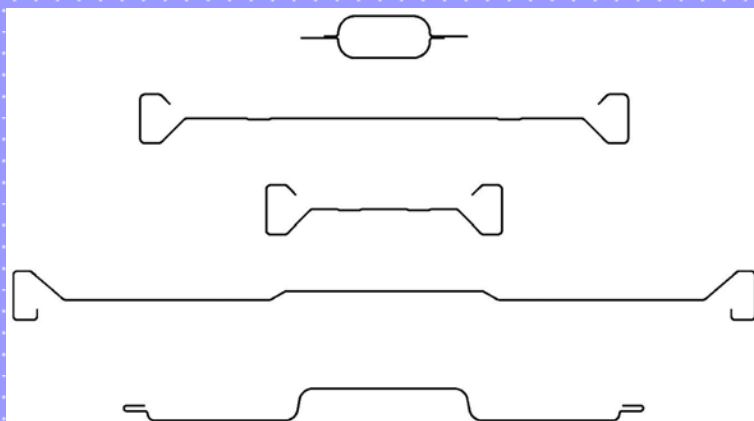
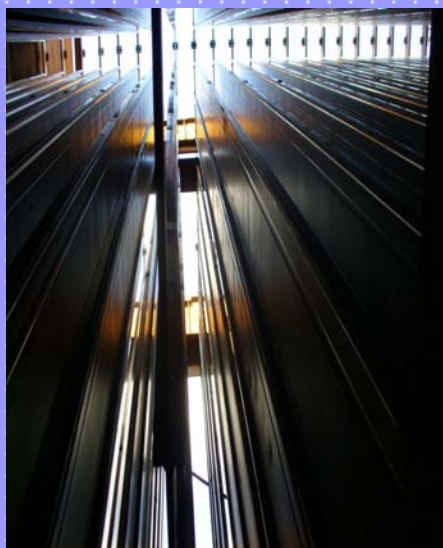


Australian Rollforming Manufacturers (ARM) manufacture a range of Collector Plates that are widely used in the emissions control systems of Electrostatic Precipitators that use electricity to remove dust particles from a gas stream. This technology is widely used in installations such as coal fired power stations, cement works and many types of refineries.

ARM's range of Collector Plates includes the original standard range of profiles which were designed by Flakt, Joy and Lurgi.



ARM's unique technology and quality control processes ensures that ARM Collector Plates are **precision made to exacting tolerances**, particularly in regard to the straightness of the panels and being free of any bowing.

The straightness of the panels is critical to their performance, and ARM is able to maintain this to no more than 3 mm over an 14 metre long panel.



Contact us to discuss your requirements. Our reputation for **reliability** and our ability to partner our customers sets us apart from our competitors.

www.ausrollform.com.au